

PROJECT BY :

NEELKANTH ENTERPRISE

SITE ADDRESS:- 99 / 1B / 2A / 2, GANDHAR-PALE, MAHAD-402301.

CONTACT NO. :- 9819367705 / 9867738677.

EMAIL :- inquiry.neelkanth@yahoo.com

CLOUD 99

DEVELOPED BY:

NEELKANTH ENTERPRISE

MahaRERA Registration No.

ARCHITECT: DESIGN STUDIO
AR. ARSALAN PALLAWKAR

R.C.C CONSULTANT:
AGHARKAR CONSULTANT

LEGAL ADVISOR:
ADV. SANTOSH.J.PALANDE

DISCLAIMER: THE INFORMATION IN THIS BROCHURE INDICATES THE KIND OF DEVELOPMENT THAT IS PROPOSED. IT IS PREPARED AND ISSUED IN GOOD FAITH AND IS FOR GUIDANCE ONLY. IT DOES NOT CONSTITUTE PART OF ANY DEED OR CONTRACT. IT IS SUBJECT TO THE APPROVAL OF THE AUTHORITIES OR THE COLLECTOR. IN THE INTEREST OF THE CONTINUING IMPROVEMENT OF THE PROJECT AND/OR ANY CHANGES AS SUGGESTED BY THE AUTHORITIES OR COLLECTOR, THE DEVELOPERS RESERVE THE RIGHT TO ALTER THE LAYOUT, PLANS, PROVISION FOR PARKING, RECREATION, OPEN SPACES, ETC. SPECIFICATIONS OR FEATURES OF THE BUILDINGS WITHOUT ANY PRIOR NOTIFICATION TO ANY BUYERS IN THE PROJECT. THE PHOTOGRAPHS AND THE ARTIST IMPRESSIONS IN THE BROCHURE ARE FOR REFERENCE ONLY.

A serene sunset scene over a body of water. The sky transitions from a deep blue at the top to a bright orange and yellow near the horizon. In the foreground, several wooden piers with covered walkways extend into the water. A boat is docked at one of the piers. The water is calm, reflecting the colors of the sky.

CLOUD 9

SKY HIGH, WE REACH FOR THE TOP.
CLOUD 9'S DESIGN,
NEVER TO STOP,
THE FIRST IN THE CITY,
IT STANDS ALONE,
A TRUE MASTERPIECE,
A BUILDING TO OWN.



PRESENTING TO YOU
MAHAD'S 1 ST
G+9 FLOORS MAGNIFICANT BUILDING

CLOUD 9

A LIFESTYLE THAT
OUTRANKS OTHER



*"Home is the canvas where
we paint our life's most
beautiful memories."*



*"A place to build a life
and make memories that
will last a lifetime."*

*"Where life begins and
love never ends, a place we
call home."*



"The meeting of two rivers is a place of magic, where the waters of one flow into the other, creating a new path that will lead them both forward."





Specification

FLOORING

Vitrified flooring in all rooms.

KITCHEN

Granite kitchen platform with S.S. Sink • Wall Tiles up to beam level.

DOORS

Decorative Laminated Flush Main doors with wood frame.
Decorative Laminated Flush Internal doors with wooden frame.
Laminated Flush bath & W C doors with a marble frame.

BATH & WC

Designer glazed tiles dado up to beam bottom.
Branded sanitary wares, Geyser point in the bathroom.
Concealed Plumbing with Premium Quality C. P. fitting.

WINDOWS

Powder coated aluminum sliding down.

WALLS & PAINTS

Putty-finished internal walls with distemper paint.
Semi Acrylic emulsion on external walls.

ELECTRIFICATION

Concealed copper wiring & fittings of reputed make.

WATER TANK

Under around and overhead water tank with adequate water storage.

TERRACE

Special brickbat waterproofing treatment.



*"The place where the heart finds
joy and the soul finds peace,
where memories last a lifetime."*



Location Advantages

Raigad fort

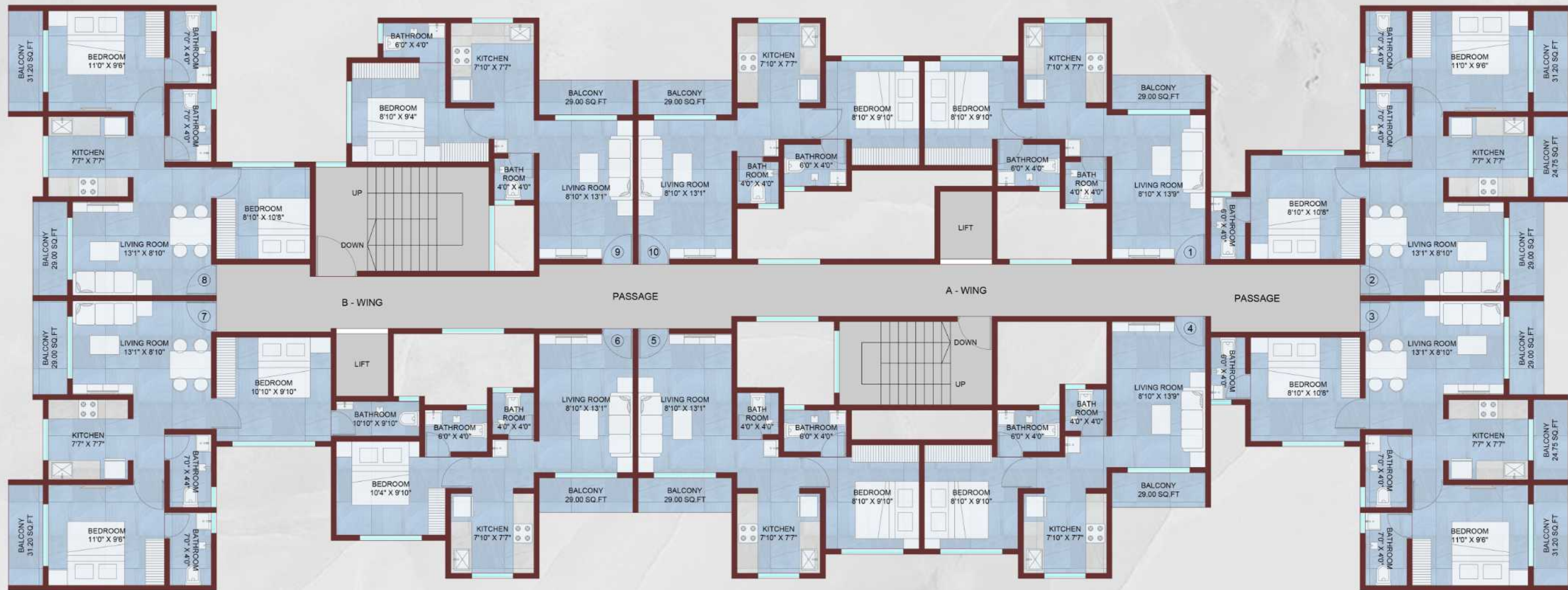
Raigad trekking

Mandle waterfall

Savitri river & Gandhari river
sangam



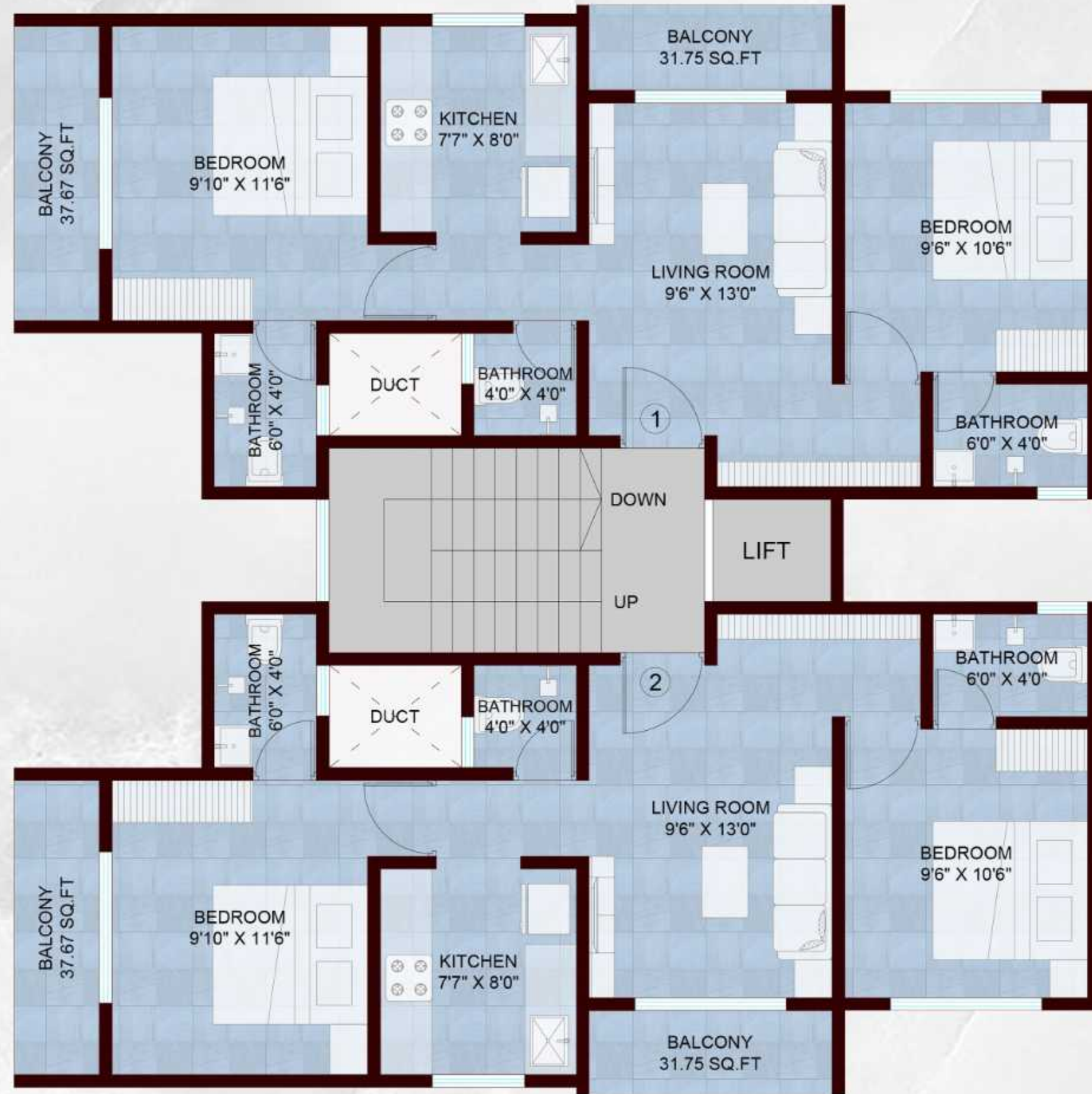
GROUND FLOOR PLAN



TYPICAL FLOOR PLAN (A & B WING)

LOCATION MAP

LOCATION ADDRESS : 99/1B/2A/2, GANDHAR-PALE, MAHAD



TYPICAL FLOOR PLAN (C - WING)

- Hospital** 05 mins walk
- School** 05 mins walk
- Restaurant** 05 mins walk
- Mumbai - Goa Highway** 02 mins walk
- Gandhar-Pale Buddhist Caves** 10 mins walk
- Chaydar Lake** 15 mins walk
- Chhatrapati Shivaji Maharaj Chowk** 20 mins walk